

# Area Marquee Hire

## Spring Conference 2009

### Birmingham

10/03/2009



# CC Hire Stock

- ☑ 3m Bay Blackout & Starlight
  - ❖ 6m, 9m, 12m & 15m span
- ☑ 5m Bay Blackout & Starlight
  - ❖ 15m, 20m 25m & 30m span
- ☑ 3m High Blackout & Starlight Wall
  - ❖ 3m & 5m width
  - ❖ Pocket at 2.3 & 2.4m

# CC Hire Stock

- ☑ 3m Bay Pleated Mid Ivory
  - ❖ 6m, 9m, 12m & 15m span
- ☑ 3m Bay Flat Mid Ivory
  - ❖ 9m & 12m Span
- ☑ 5m Bay Flat Ivory
  - ❖ 12m, 15m & 20m Span
- ☑ Walling
  - ❖ 3m x 2.3m & 5m x 3m - Pleated & Flat

New

New

# Mistakes people make??

10/03/2009



## Staking

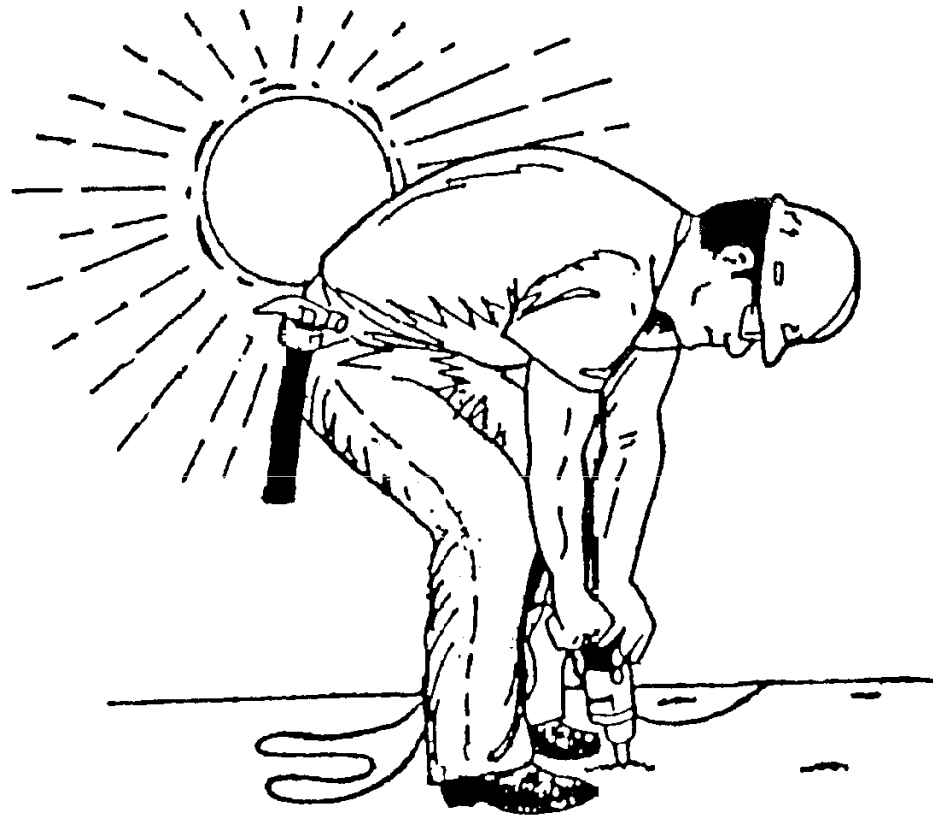
Check for underground services

Square Tent

Stake base plates before lifting frame

12 & 15m Tents require 2 stakes per side base plate

On hard standing – M12 bolt or Lots of Weight (1te) and tension from eave



## Build Errors

Is Site secure from Customers, Children and animals?

Ensure correct components used

Check for damage/wear to components when assembling

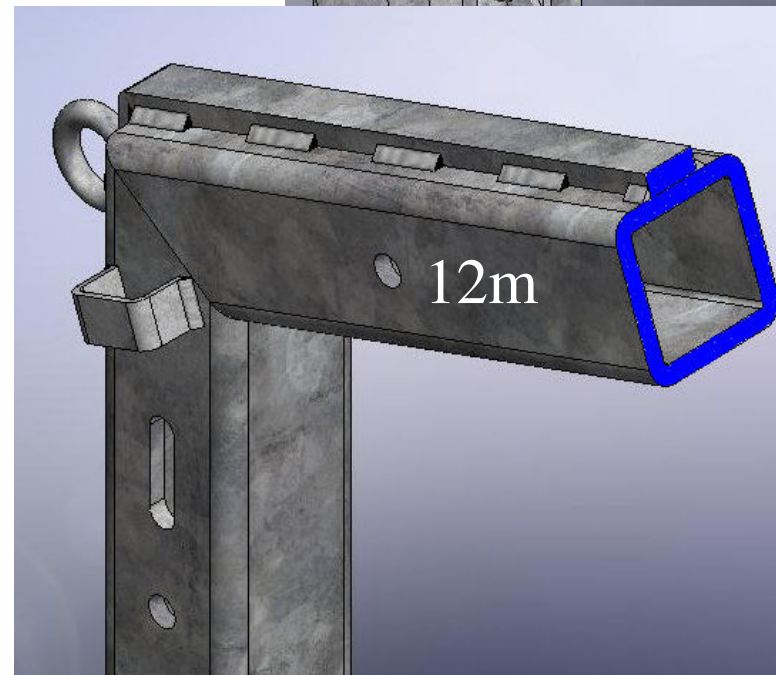
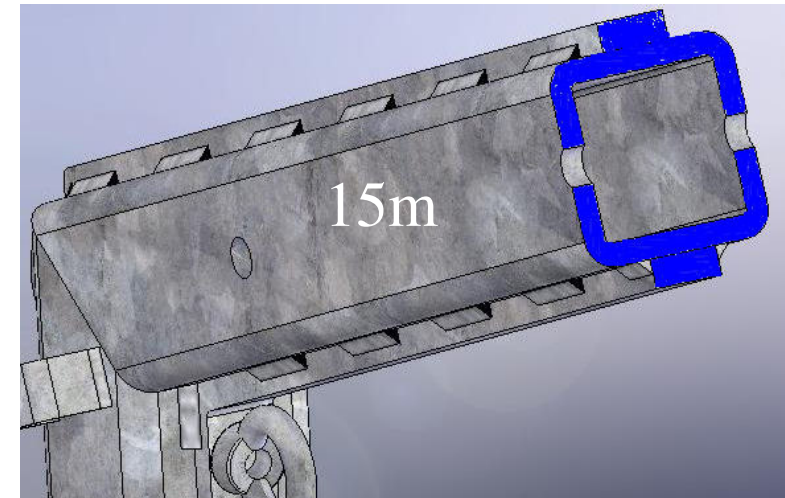
12m vs 15m Eave knuckle

Scissors and roof wires in correct bays

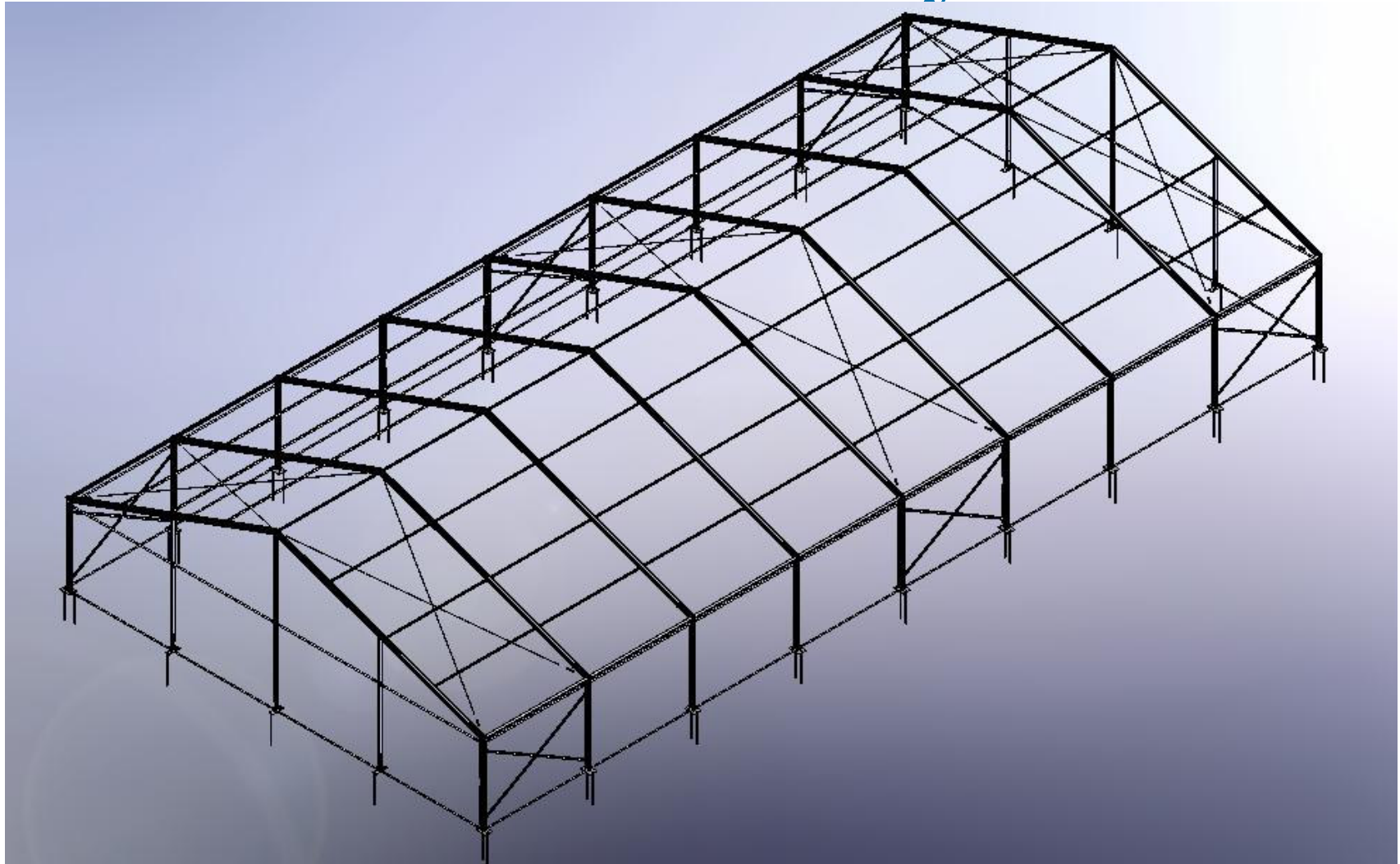
Brace wire correctly tensioned (can pull tent out of square)

Don't leave doors and walls open or unlaced

Fit ground rails



# Braced bays



10/03/2009





## Tensioning

Gable leg secured by bolt  
OR R Clip on C/L

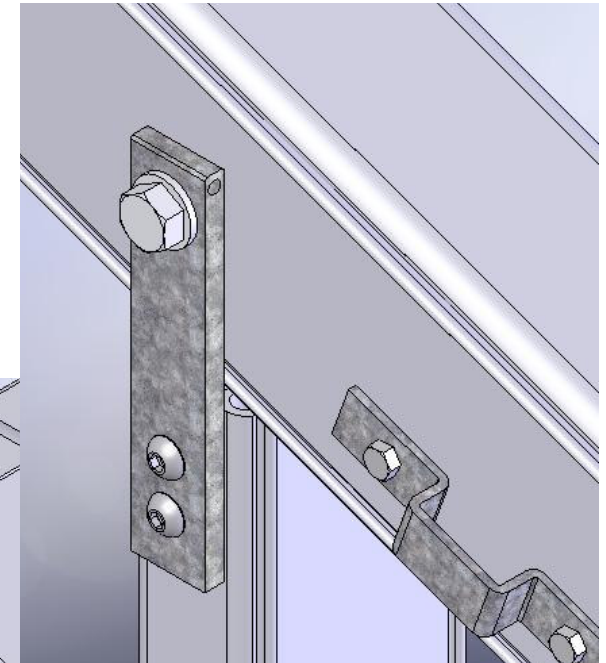
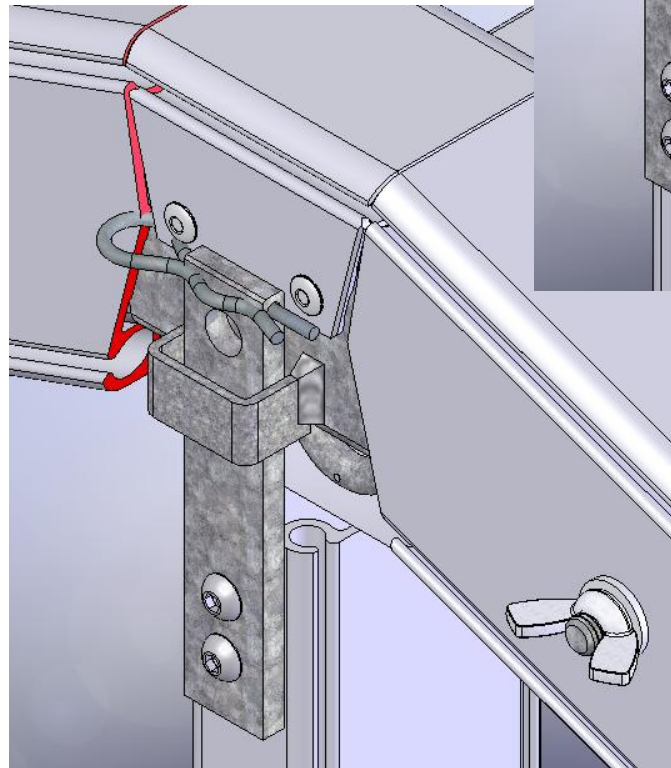
Wing nuts on scissors not tightened

R Clip on foot pins not in place

Ends of bungee on roof not wrapped around leg

Tension roofs immediately if raining during install

At C/L



On beam



## Personal safety

Wear PPE as necessary

Don't leave purlins hanging from one end

Don't walk on roof PVC

Watch out for bungee elastic getting caught when pulling over

Don't use roof bungee to secure roofs when packed

Double check any knots that secure linings above people

Use shackles and straps when fitting linings

12 & 15m tent require 4 people to lift arches safely



## Easy life

Use a fly rope with roofs to pull back ropes

Use of Purlin props

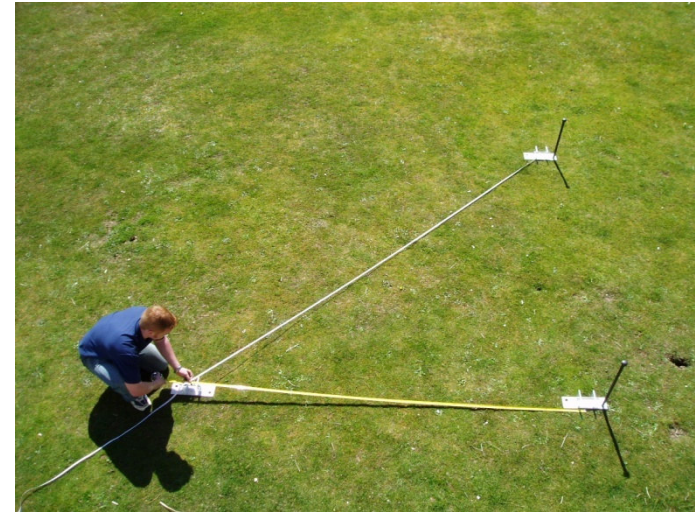
Take time to square the tent, avoids catching of roofs

Use curtain rail in D ring to push gable up track

Fit lining hardware to frame before pushing up arch

Knot lining lifting rope at tie off position

Advice to customers about tent care, keeping doors & walls closed etc.



# Asian Persuasion

Or how to **fake** it!

10/03/2009



# Basics

☑ Using colours to ‘Spice Up’ that function

❖ Moroccan

❖ Asia

➤ Mandap

➤ Henna

❖ Arabian

# History vs Culture

## Moroccan:

Colour scheme based on earthen colours,  
Reds, Yellows, Orange & Brown.

Emerging from understated wealth and not  
opulence.



# History vs Culture



10/03/2009





# Moroccan



10/03/2009



# History vs Culture

**Asia:**

Colour scheme based on Red, Burgundy & Gold

The illusion of opulence. ‘Wealth via *intricacy*’

# Asia



10/03/2009





# Asia



10/03/2009



# Henna

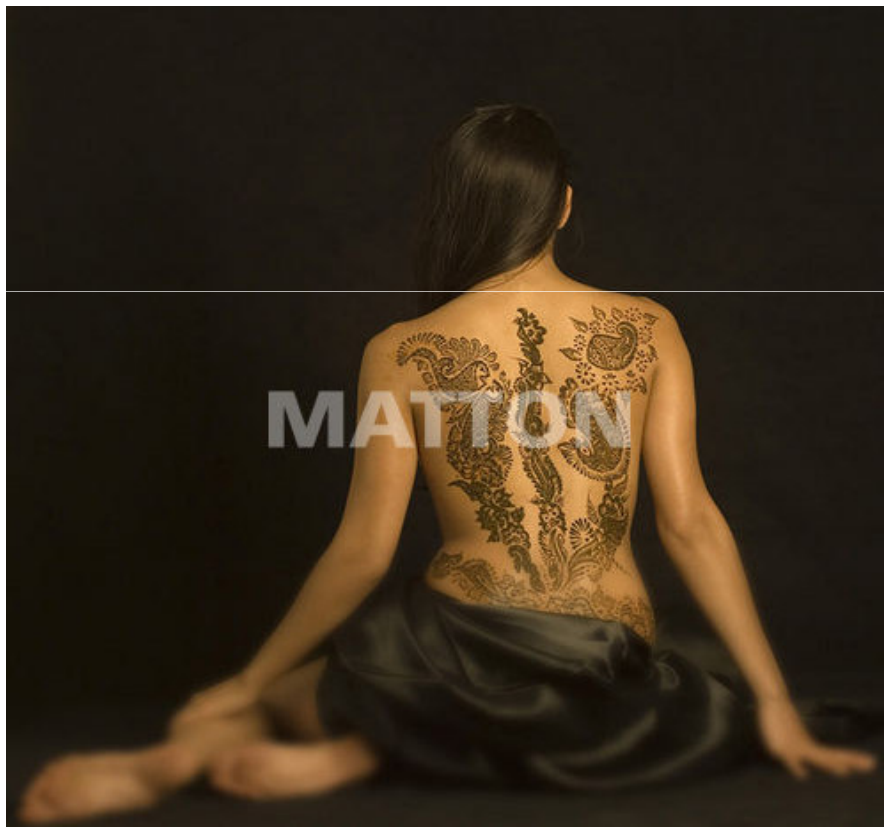
Equivalent to the western 'Hen Night'

Temporary body decoration

Carried out at separate venue in a smaller and more intimate setting

Colour scheme based on Burgundy and Green

# Henna



10/03/2009





# Henna Stage



10/03/2009



# Mandap

Equivalent to Church altar

Ceremonial Platform

Centralised focal point

# Mandap



10/03/2009



# Mandap



10/03/2009



# History vs Culture

## **Middle East:**

Colour scheme based on Burgundy, Blue & Gold

The face of opulence!

Culture based on fantasy and fiction, the Arabian Nights



# Middle East



10/03/2009





# Middle East



10/03/2009



# Summary

- ☑ Ethnic colours
- ☑ Use of a primary colour incorporating secondary complimentary features
- ☑ The way to remember is think 'opulence', think 'splendour'

# Summary

Moroccan



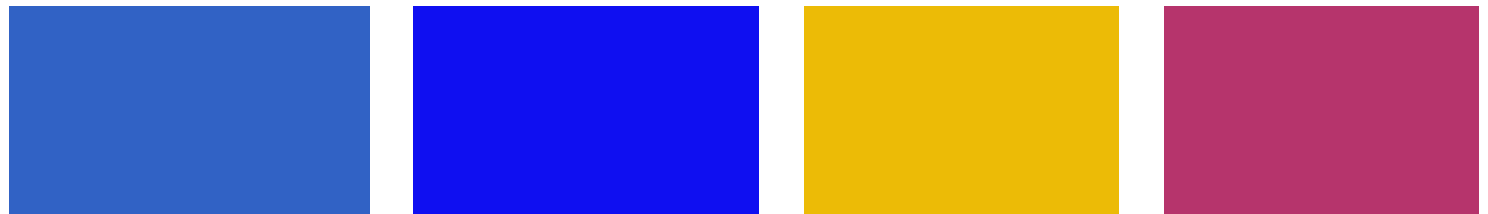
Asia



Henna



Arabian



10/03/2009



كهو دا هفبز

*See you next time!*