



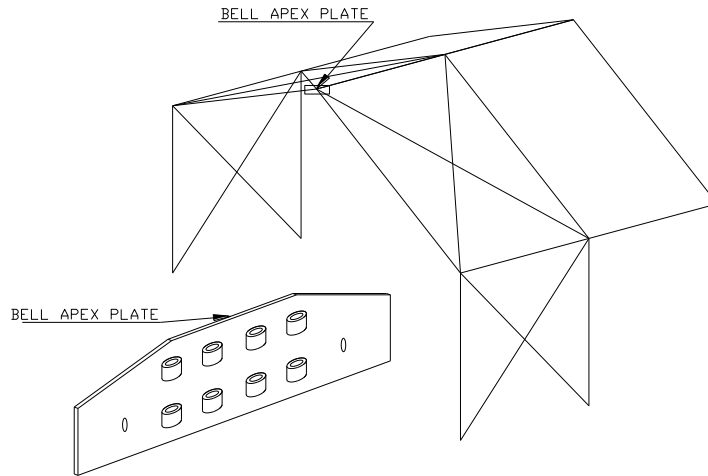
MARQUEE INSTALLATION HANDBOOK

Gable End Extensions

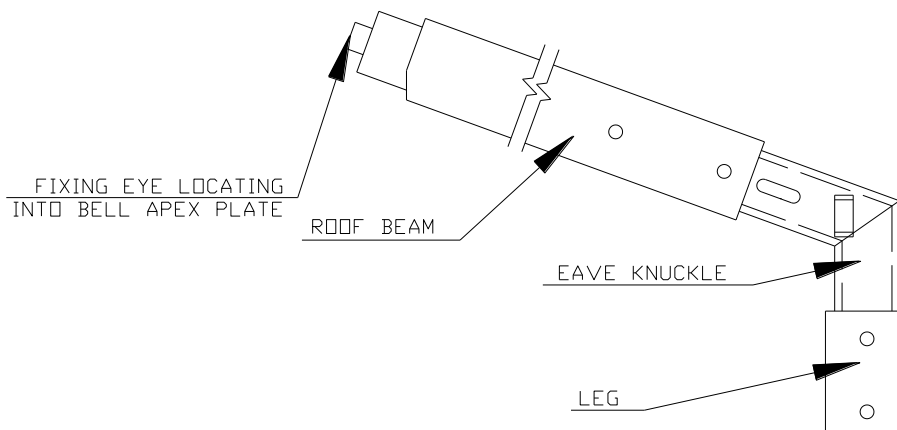


Bell End Assembly Instructions

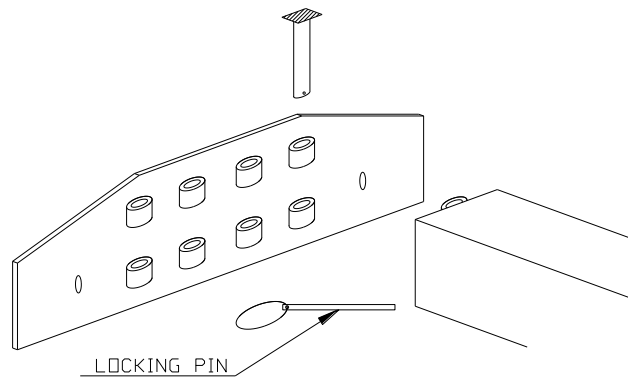
- Fit bell apex plate to portal frame locating onto eyebolts either side of apex.



- Erect central part of marquee in the normal manner making sure bell apex plate is to the outside of assembled frame.
- Assemble leg and roof beam joining with eave knuckle, fit bell and insert into roof beam extrusion.

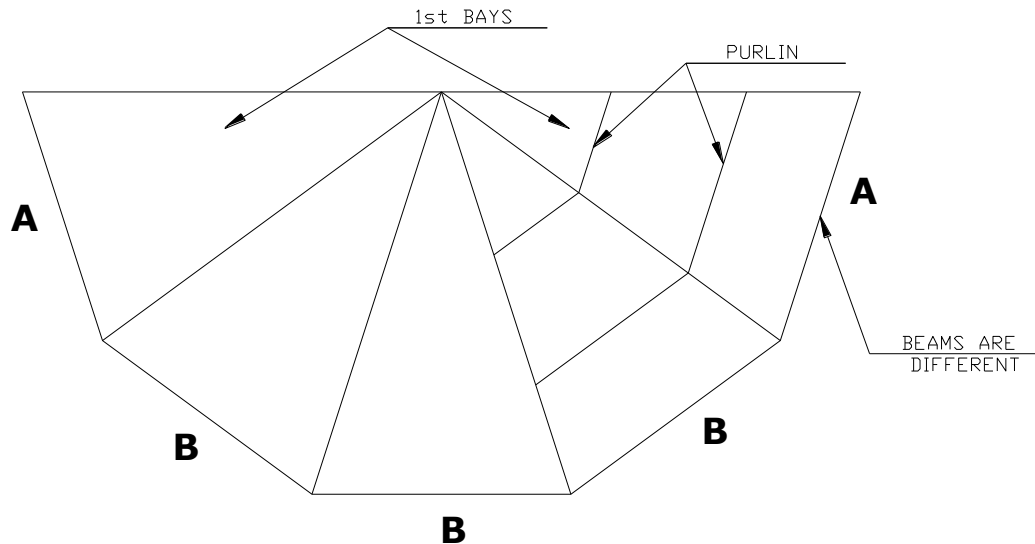


- Offer up 1st beam / leg to hand and pin, fit locking pin

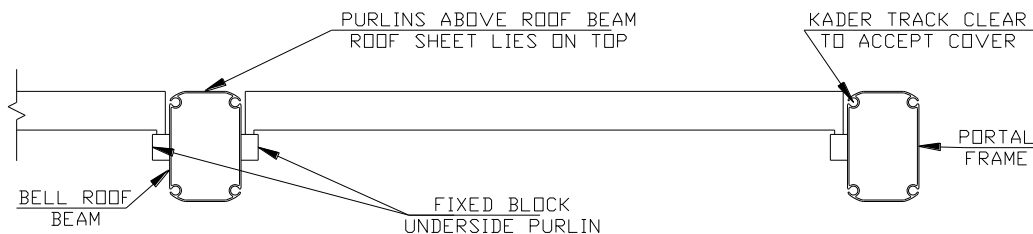


- Fit eave purlin.

NB: Purlins are different for 1st bay on either side of bell end. This is due to the geometry and the need to have lengths of all the bell end walls the same.



- When putting up bay 'A', ensure that purlin has block on underside at one end only as below.



- Secure legs to ground.
- Fit remaining frames and the eave purlins. Then fit intermediate purlins.
- Throw over pulling ropes and pull over roof sheet. The S hooks on the bungee tend to catch in the kader groove of the roof beams as the PVC roof sheet is pulled over, rolling the roof sheet in to a roll helps to avoid this. Care is also required at the centre point to ensure kader feeds through to second beam. Secure roof to eave with bungee and 'S' hooks.
- Fit PVC walls and secure.
- *NB: If using as an outdoor porch area ensure internal gable is fitted prior to Bell Apex Plate fitting.*

Hip End Assembly Instructions

- ❑ Equipment needed – Ridge Spreader
Intermediate Beam
Diagonal Eave Rail
Central Beam
Diagonal Roof Beam (2-part)
Leg with Angled Eave Knuckle
Intermediate Purlins
- ❑ Bolt spreader plates to ridge knuckle of A frame.
- ❑ Bolt the two parts of roof beam together and attach to leg with the angled eave knuckle and spreader plate inserts. Repeat on other side
Note: Corner legs and knuckles stand at 45°
- ❑ Attach spreader plate insert onto spreader plate ridge with 'R' clip. Then attach diagonal roof beams to the inserts. Attach eave rails either side to stabilise.
- ❑ Attach legs to two intermediate beams and attach to central beam insert with pin and 'R' clip.
- ❑ Attach intermediate beam to inserts on diagonal roof and secure leg by attaching angled eave rail between corner and beam.
- ❑ Next, attach the central beam section to spreader plate with pin and 'R' clip and secure by inserting standard eave rail between intermediate and central beam.
- ❑ Attach second intermediate beam as before and secure with eave rails. Insert purlins with purlin prop for whole structure.
- ❑ Throw pulling rope over the apex and attach it to single D shackle. Pull the roof section over; ensuring the kadeer is pulled through the kadeer track. Then secure bungee flange on two corners and all intermediate eave knuckles. Insert walls as standard.
- ❑ Dismantle in reverse.